

Operations of the State Treasury

FROM

DEC'R 16, 1857, TO JUNE 30, 1858.

MONTHLY RECEIPTS

From December 16, 1857, to June 30, 1858, inclusive.

December 15, 1857, balance on hand, \$88,686 29.....	
From December 16, to December 31, 1857, received.....	\$313,534 34
From January 1, to January 31, 1858, received.....	203,468 38
From February 1, to February 28, 1858, received.....	37,689 34
From March 1, to March 31, 1858, received.....	4,683 62
From April 1, to April 30, 1858, received.....	139,665 82
From May 1, to May 31, 1858, received.....	4,230 20
From June 1, to June 30, 1858, received.....	13,091 02
Total received.....	\$716,362 72
Old Balance, as above.....	88,686 29
	\$805,049 01

MONTHLY RECEIPTS

From July 1, 1858, to December 15, 1858, inclusive.

June 30, 1858, Balance on hand, \$271,109 34.....	
From July 1, to July 31, 1858, received.....	\$176,699 21
From August 1, to August 31, 1858, received.....	23,504 86
From September 1, to September 31, 1858, received.....	12,135 70
From October 1, to October 31, 1858, received.....	188,786 21
From November 1, to November 30, 1858, received.....	56,101 76
From December 1, to December 15, 1858, received.....	36,104 64
Total received.....	\$493,332 38
Old Balance, as above.....	271,109 34
	\$764,441 72
Received from Dec. 16, 1857, to June 30, 1858..	\$716,362 72
Received from July 1, 1858, to Dec. 15, 1858..	\$493,332 38
	\$1,209,695 10
Balance on hand December 15, 1857.....	88,686 29
	\$1,298,381 39

AND EXPENDITURES,

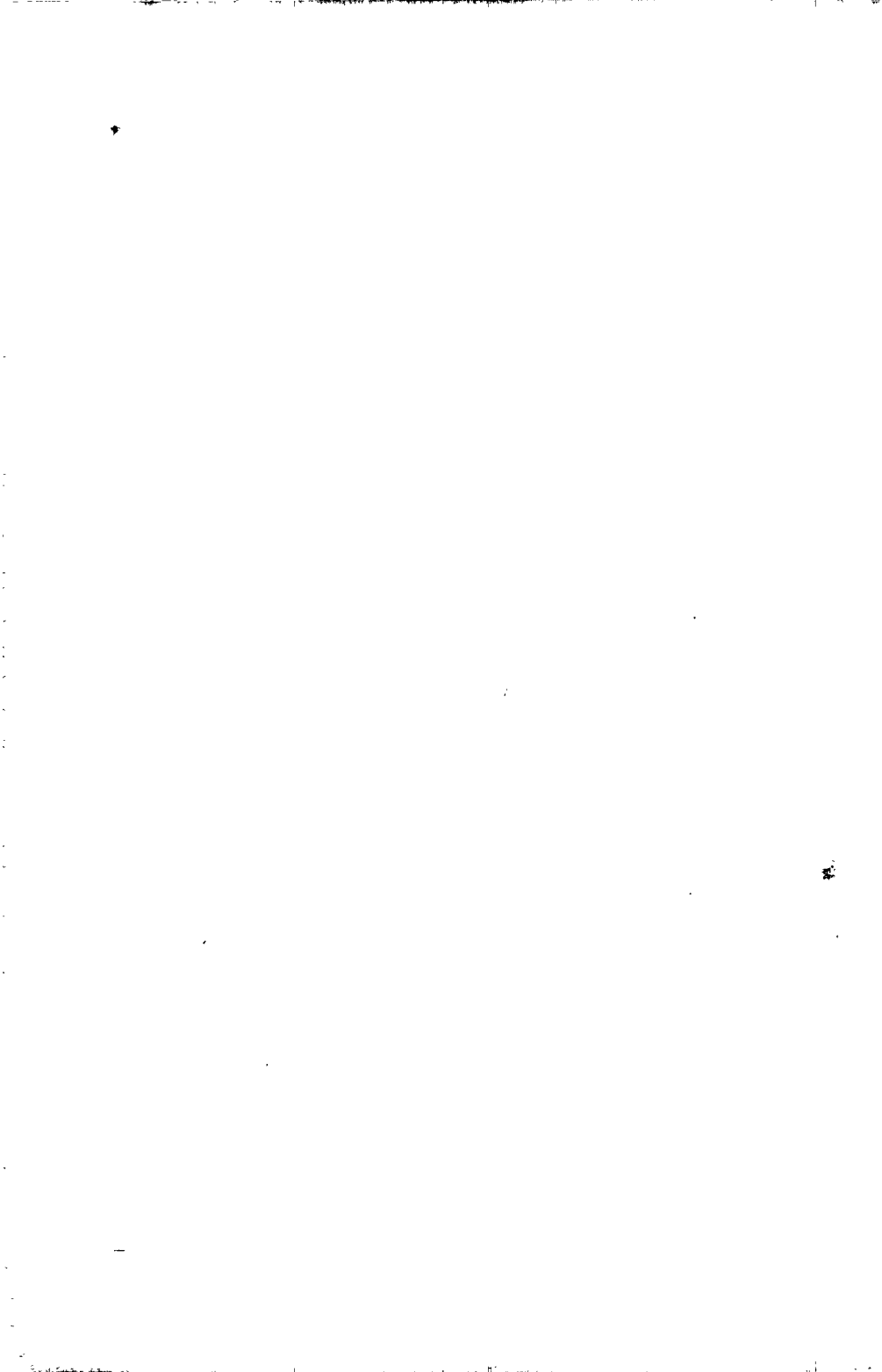
From December 16, 1857, to June 30, 1858, inclusive.

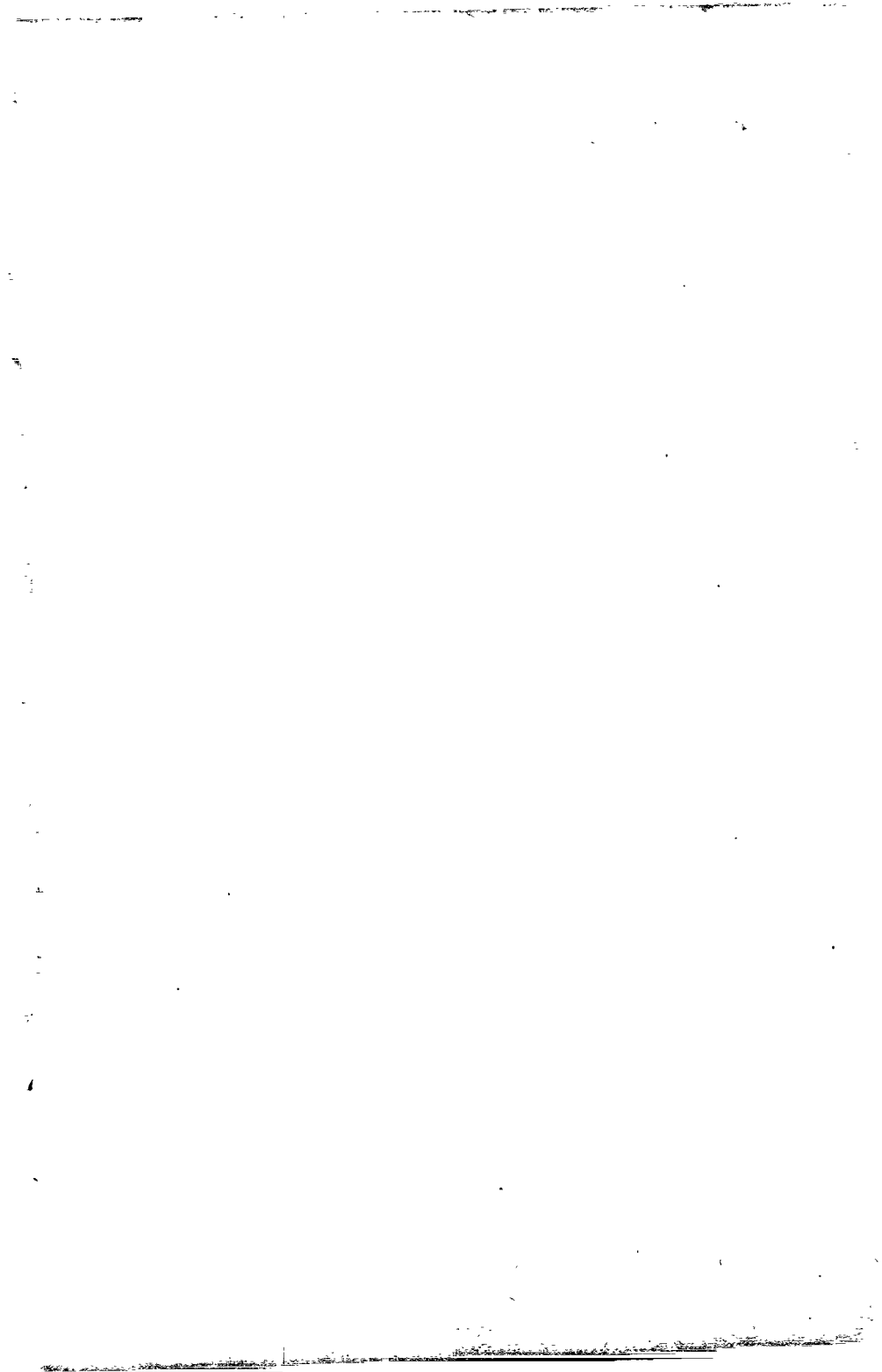
From December 16, to December 31, 1857, expended.....	\$50,997 92
From January 1, to January 31, 1858, expended.....	87,665 62
From February 1, to February 28, 1858, expended.....	80,069 24
From March 1, to March 31, 1858, expended.....	102,500 00
From April 1, to April 30, 1858, expended.....	96,937 97
From May 1, to May 31, 1858, expended.....	52,627 08
From June 1, to June 30, 1858, expended.....	63,141 84
Total expended.....	\$583,939 67
Balance on hand, June 30, 1858.....	271,109 34
	<hr/>
	\$805,049 01

AND EXPENDITURES,

From July 1, 1858, to December 15, 1858, inclusive.

From July 1, to July 31, 1858, expended.....	\$70,545 96
From August 1, to August 31, 1858, expended.....	48,394 17
From September 1, to September 30, 1858, expended.....	32,104 15
From October 1, to October 31, 1858, expended.....	46,295 17
From November 1, to November 30, 1858, expended.....	35,633 41
From December 1, to December 15, 1858, expended.....	9,298 60
Total expended.....	\$242,271 46
Balance on hand, December 15, 1858.....	522,170 26
	<hr/>
	\$764,441 72
Expended from Dec. 16, 1857, to June 30, 1858..	\$583,939 67
Expended from July 1, 1858, to Dec. 15, 1858..	242,271 46
	<hr/>
	\$776,211 13
Balance on hand, December 15, 1858.....	522,170 26
	<hr/>
	\$1,298,381 39





DR.

GENERAL FUND.

1857 & '58	To Cash paid by James L. English, State Treasurer, for the redemption of Warrants drawn on this Fund from Dec. 16, 1857, to January 6, 1858, inclusive.....	\$50,903 41	
1858.....	To Cash paid by Thomas Findley, State Treasurer, for the redemption of Warrants drawn on this Fund from January 8, 1858, to June 30, 1858, inclusive	\$443,727 15	
1857.			\$494,630 56
Dec. 16..	Transferred to School Fund, per Controller's order		16,475 20
1858.			
Jan. 27...	Transferred to School Fund, per Controller's order,		82 50
Jan. 27...	Transferred to Military Fund, per Controller's order		31 04
March 1.	Transferred to Library Fund, for 115 Members of the Legislature at \$5 each, per Controller's order		575 00
March 5.	Loss sustained by converting Gold Dust received from Treasurer of Tulare County into coin, at the United States Branch Mint, San Francisco, per Controller's order		312 40
March 9.	Transferred to School Fund, per Controller's order,		344 20
March 9.	Transferred to Military Fund, per Controller's order.....		257 10
April 22.	Transferred to Interest and Sinking Fund of 1857, per Controller's order.....		671 26
June 23..	Transferred to School Fund, per Controller's order,		16,475 20
	Balance in this Fund, June 30, 1858.....		238,669 14
			<u>\$768,523 60</u>

GENERAL FUND.

CR.

1857.....	By Balance in this fund, December 15, 1857. (See Tabular Statement.).....	\$63,503 05	
1857 & '58	By Cash received by James L. English, State Treasurer, into this Fund, from December 16, 1857, to January 6, 1858, inclusive. (See Tabular State- ment.)	\$392,009 71	
1858.....	By Cash received by Thomas Findley, State Treasurer, into this fund from January 8, 1858, to June 30, 1858, inclusive. (See Tabular Statement.)	\$312,454 84	\$767,967 60
1858. April 22..	Transferred from Military Fund to this Fund, per Controller's order.....		556 00
			<u>768,523 60</u>
	Balance, June 30, 1858.....		<u>\$238,669 14</u>

DR.

HOSPITAL FUND.

1857 & '58	To Cash paid by James L. English, State Treasurer, for the redemption of Warrants drawn on this Fund, from December 16, 1857, to January 6, 1858, inclusive	\$5,037 27	
1858.....	To Cash paid by Thomas Findley, State Treasurer, for the redemption of Warrants drawn on this Fund, from Jan. 8, 1858, to June 30, 1858, inclusive.....	\$2,848 77	
	Balance in this Fund, June 30, 1858		\$7,886 04 3,231 70
			<u>11,117 74</u>

DR.

SCHOOL FUND.

1857 & '58	To cash paid by James L. English, State Treasurer, for the redemption of Warrants drawn on this Fund, from December 16, 1858, to January 6, 1858, inclusive	\$10,561 20	
1858.....	To cash paid by Thomas Findley, State Treasurer, for the redemption of Warrants drawn on this Fund, from January 8, 1858, to June 30, 1858, inclusive	19,356 95	
1858.			\$29,918 15
Jan. 5 ...	Transferred to Military Fund, per Controller's order		3 87
	Balance in this Fund, June 30, 1858.....		23,074 06
			<u>\$52,996 08</u>

HOSPITAL FUND.

Cr.

1857.....	By Balance in this Fund, December 15, 1857. (See Tabular Statement).....	\$8,603 74	
1858.....	By Cash received by Thomas Findley, State Treasurer, into this Fund from January 8, 1858, to June 30, 1858, inclusive. (See Tabular Statement.).....	\$2,514 00	
			\$11,117 74
			<u>\$11,117 74</u>
	Balance, June 30, 1858		\$3,231 70

SCHOOL FUND.

Cr.

1857	By Balance in this Fund, December 15, 1857. (See Tabular Statement).....	\$12,208 75	
1857 & '58	By Cash received by James L. English, State Treasurer, into this Fund, from December 16, 1857, to January 6, 1858, inclusive. (See Tabular Statement,)	3,500 16	
1858.....	By Cash received by Thomas Findley, State Treasurer, into this Fund, from January 8, 1858, to June 30, 1858, inclusive. (See Tabular Statement.)	3,910 07	
1857.			\$19,618 98
Dec. 16..	Transferred from General Fund, per Controller's order		16,475 20
1858.			
Jan. 27 ..	Transferred from General Fund, per Controller's order.....		82 50
Mar. 9...	Transferred from General Fund, per Controller's order.....		344 20
June 23..	Transferred from General Fund, per Controller's order.....		16,475 20
			<u>\$52,996 08</u>
	Balance, June 30, 1858		\$23,074 06

MILITARY FUND.

Cr.

1857.....	By Balance in this Fund, December 15, 1857. (See Tabular Statement.).....	\$826 31	
1857 & '58	By Cash received by James L. English, State Treasurer, into this Fund, from December 16, 1857, to January 6, 1858, inclusive. (See Tabular Statement)....	456 24	
1858.....	By Cash received by Thomas Findley, State Treasurer, into this Fund, from January 8, 1858, to June 30, 1858, inclusive. (See Tabular Statement.).....	818 35	
1858			\$2,100 90
Jan. 5 ...	Transferred from School Fund, per Controller's order.....		3 87
Jan. 27...	Transferred from General Fund, per Controller's order		31 04
Mar. 9...	Transferred from General Fund, per Controller's order		257 10
			<u>\$2,392 91</u>
	Balance, June 30, 1858.....		<u>\$1,047 43</u>

LIBRARY FUND.

Cr.

1857.....	By Balance in this Fund, December 15, 1857. (See Tabular Statement.).....	\$336 06	
1857 & '58	By Cash received by James L. English, State Treasurer, into this Fund, from December 16th, 1857, to January 6, 1858, inclusive. (See Tabular Statement)....	650 00	
1858.			\$986 06
March 1..	Transferred from General Fund, for one hundred and fifteen Members of the Legislature, at five dollars each, per Controller's order.....		575 00
			<u>\$1,561 06</u>
	Balance, June 30, 1858.....		<u>\$1,158 02</u>

DR. INTEREST AND SINKING FUND OF 1857.

1858.....	To Balance in this Fund, June 30, 1858. (See Tabular Statement for \$49 35.).....	\$720 61
		\$720 61

DR. ESTATES OF DECEASED PERSONS.

1858.....	To Balance in this Fund, June 30, 1858.....	\$89 09
		\$89 09

DR. HIRAM SMITH, JR.

(Absent heir of H. Smith, deceased.)

1858.....	To Balance in this Fund, June 30th, 1858.....	\$3,119 29
		\$3,119 29

INTEREST AND SINKING FUND OF 1857. Cr.

1858.....	By Cash, received by Thomas Findley, State Treasurer, into this Fund, from January 8, 1858, to June 30, 1858, inclu- sive. (See Tabular Statement.).....	\$49 35	
1858.			\$49 35
April 22.	Transferred from General Fund, per Con- troller's order.....		671 26
			<u>\$720 61</u>
	Balance, June 30, 1858.....		<u>\$720 61</u>

ESTATES OF DECEASED PERSONS. Cr.

1857.....	By Balance in this Fund, December 15, 1857. (See Tabular Statement.).....	\$89 09	
			\$89 09
			<u>\$89 09</u>
	Balance, June 30, 1858.....		<u>\$89 09</u>

HIRAM SMITH, JR. Cr.

(Absent heir of H. Smith, deceased.)

1857.....	By Balance in this Fund, Dec. 15th, 1857, (See Tabular Statement.).....	\$3,119 29	
			\$3,119 29
			<u>\$3,119 29</u>
	Balance, June 30th, 1858.....		<u>\$3,119 29</u>

BALANCES,

In the following Funds, June 30, 1858.

General Fund.....	\$238,669 14
Hospital Fund.....	3,231 70
School Fund.....	23,074 06
Military Fund.....	1,047 43
Library Fund.....	1,158 02
Interest and Sinking Fund of 1857.....	720 61
Estates of Deceased Persons.....	89 09
Hiram Smith, Jr., absent Heir of H. Smith, deceased.....	3,119 29
	\$271,109 34

Cash on hand, June 30th, 1858.....\$271,109 34

