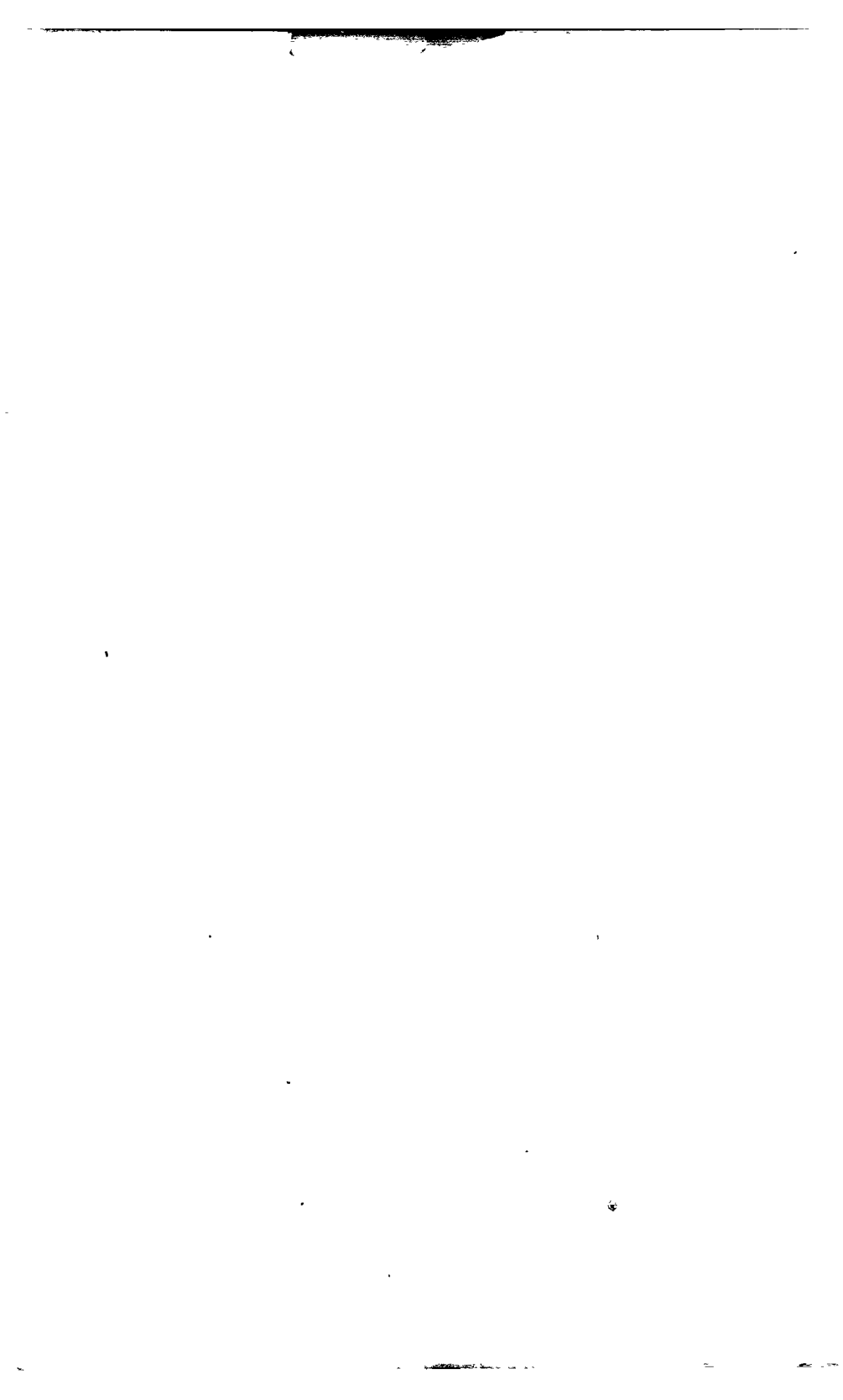


OPERATIONS OF THE STATE TREASURY

FROM

JULY 1, 1856. TO FEBR'Y 11, 1857.





Dr.

## GENERAL FUND.

1856.	To cash paid for the redemption of warrants drawn on this fund, from the 1st July, 1856, to 11th February, 1857, inclusive, - - -	\$244,757 82
July 12	To cash paid for the redemption of certificates of balance, - - - - -	106 42
September 2	To cash paid bond No. 38, Temporary State Loan, principal and interest, D. S. & Church, - - -	1,249 00
October 18	To transfer to Library Fund, order of Comptroller,	165 00
November 7	To Temporary Loan, as follows:	
	Interest Fund, 1855, July and January interest and exchange, - - - - -	40,925 72
	Interest Fund, 1852, July and January interest and exchange, - - - - -	65,429 09
	Interest Fund, 1856, January interest and exchange, - - - - -	16,541 10
December 6 1857.	To transfer to School Fund, for error in Comptroller's order, settlement with Sierra county,	94 72
January 10	To Temporary Loan as follows:	
	Interest Fund, 1852, July interest, 1857, - - -	25,056 55
	Interest Fund, 1855, July interest, 1857, - - -	13,678 76
	Interest Fund, 1856, July interest, 1857, - - -	24,228 64
February 26	To cash paid Jas. L. English, Treasurer, - - -	2,550 76
	Balance, - - - - -	25,558 23
		<hr/>
		\$460,341 81

Dr.

## HOSPITAL FUND.

February 26	To cash paid for the redemption of registered warrants drawn on this fund, from July 1st, 1856, to February 11th, 1857, inclusive, - - -	\$543 42
	To cash paid Jas. L. English, Treasurer, - - -	9,318 18
	Balance, - - - - -	105 50
		<hr/>
		\$9,967 10

## GENERAL FUND.

CR.

1856.			
July	1	By balance, - - - - -	\$39,418 49
		By cash received into this fund from July 1st, 1856, to February 11, 1857, inclusive. (See tabular statement,) - - - - -	398,453 01
February	7	By amount received for sale of school land warrants, in warrants, - - - - -	4,480 00
February	7	By transfer from School Fund, to correct errors in school land warrants, - - - - -	2,240 00
February	7	By amount Palmer, Cook & Co.'s draft on J. Cook, New York, paid to H. Bates in September, 1856, - - - - -	15,000 00
February	7	By exchange on above, \$15,000 erroneously charged off in November, 1856, - - - - -	450 00
February	7	By transfer of certificates of balance to close the account, - - - - -	300 31
			\$460,341 81

## HOSPITAL FUND.

CR.

July	1	By balance, - - - - -	\$3,834 10
		By cash received into this fund from July 1st, 1856, to February 11th, 1857, inclusive. (See tabular statement,) - - - - -	6,033 00
Novem'r	12	By error in charging warrant No. 1,002, at \$1,228 33, should be \$1,128 33, - - - - -	100 00
			\$9,967 10

DR.

## SCHOOL FUND.

	To cash paid for the redemption of warrants drawn on this fund from July 1st, 1856, to February 11th, 1857, inclusive, - - - -	\$84,124 74
February 11	To transfer to General Fund to correct errors in crediting school land warrants, - - -	2,240 00
February 26	To cash paid Jas. L. English, Treasurer, - - -	1,085 22
	Balance, - - - - -	9,712 64
		\$97,162 60

DR.

## MILITARY FUND.

	To cash paid for the redemption of warrants drawn on this fund from July 1st, 1856, to February 11th, 1857, inclusive, - - - -	\$1,861 75
February 26	To cash paid Jas. L. English, Treasurer, - - -	2,279 99
	Balance, - - - - -	901 30
		\$5,046 04

## SCHOOL FUND.

CR.

1856.		
July	1	By balance, - - - - -
		\$43,144 41
		By cash received into this fund from July 1st, 1856, to February 11th, 1857, inclusive. (See tabular statement,) - - - - -
		37,605 07
December	6	By transfer from General Fund, for error that belonged to this fund in settlement with Sierra county, - - - - -
		94 72
February	11	By transfer from Interest Fund of 1852, being amount due from said fund for interest on receipts from sale of school land warrants, - - -
		16,318 40
		<hr/>
		\$97,162 60

## MILITARY FUND.

CR.

1856.		
July	1	By balance, - - - - -
		\$192 64
		By cash received into this fund from July 1st, 1856, to February 11th, 1857, inclusive. (See tabular statement,) - - - - -
		4,853 40
		<hr/>
		\$5,046 04

Dr.

## LIBRARY FUND.

	To cash paid for the redemption of warrants drawn on this fund from July 1st, 1856, to February 11th, 1857, inclusive, - - - - -	\$5,223 27
February 26	To cash paid Jas. L. English, Treasurer, - - -	746 06
		<hr/>
		\$5,969 33

Dr.

## ESTATES OF DECEASED PERSONS.

1857.		
February 26	To cash paid Jas. L. English, Treasurer, - - -	\$89 09

Dr.

## INTEREST TAX FUND, 1851.

1856.		
November.	To cash remitted by Wells, Fargo & Co., to pay July interest and exchange, - - - - -	\$6,180 00
November.	To cash remitted by Wells Fargo & Co., to pay 1857. January interest and exchange, - - - - -	6,180 00
January 10	To cash remitted by Pacific Express, to pay July, 1857, interest and exchange, - - - - -	5,180 90
February 26	To cash paid Jas. L. English, Treasurer, - - -	42,814 63
	Balance, - - - - -	4,071 52
		<hr/>
		\$64,427 00



## LIBRARY FUND.

CR.

1856.			
July	1	By balance, - - - - -	\$4,354 33
		By cash received into this fund from July 1st, 1856, to February 11th, 1857, inclusive. (See tabular statement,)	1,450 00
October	18	By transfer from General Fund, by order of Comptroller, - - - - -	165 00
			<hr/>
			\$5,969 00

## ESTATES OF DECEASED PERSONS.

CR

1856.			
July	1	By balance, - - - - -	\$89 09

## INTEREST TAX FUND, 1851.

CR.

1856.			
July	1	By balance, - - - - -	\$32,714 03
		By cash received into this fund from July 1, 1856, to February 11, 1857, inclusive. (See tabular statement.) - - - - -	31,713 02
			<hr/>
			\$64,427 05

DR. INTEREST TAX FUND, 1852.

July 1	To balance overdrawn, - - - - -	\$11,352 93
November.	To cash remitted by Wells, Fargo & Co., to pay July interest and exchange, - - - - -	49,440 00
November. 1857.	To cash remitted by Wells, Fargo & Co., to pay January interest and exchange, - - - - -	49,440 00
January 10	To cash remitted by Pacific Express to pay July, 1857, interest and exchange, - - - - -	50,095 08
February 11	To transfer to School Fund by order of Comptroller, being amount due that fund for interest on receipts for sale of school land warrants, - - - - -	16,318 40
February 26	To cash paid Jas. L. English, Treasurer, - - - - -	2,025 17
		<b>\$178,671 58</b>

DR. INTEREST TAX FUND, 1855.

November.	To cash remitted by Wells, Fargo & Co., to pay July interest and exchange, - - - - -	\$31,930 00
November. 1857.	To cash remitted by Wells, Fargo & Co., to pay January interest and exchange, - - - - -	31,930 00
January 10	To cash remitted by Pacific Express, to pay July, 1857, interest and exchange, - - - - -	25,235 00
February 26	To cash paid Jas. L. English, Treasurer, - - - - -	934 69
	Balance, - - - - -	4,885 82
		<b>\$94,915 51</b>

## INTEREST TAX FUND, 1852.

CR

	By cash received into this fund from July 1st, 1856, to February 11th, 1857, inclusive. (See tabular statement.)	\$82,453 40
November. 1857.	By borrowed from General Fund to pay July and January interest,	65,429 09
January 10	By borrowed from General Fund to pay July, 1857, interest,	25,056 55
	Balance overdrawn,	5,732 45
		\$178,671 58

## INTEREST TAX FUND, 1855.

CR.

1856, July 1	By balance,	\$2,255 59
	By cash received into this fund from July 1st, 1856, to February 11th, 1857, inclusive. (See tabular statement.)	38,055 44
November.	By borrowed from General Fund to pay July and January interest,	40,925 72
January 10	By borrowed from General Fund to pay July, 1857, interest,	13,678 76
		\$94,915 51

## DR. INTEREST TAX FUND, 1856.

November.	To cash remitted by Wells, Fargo & Co., to pay January interest and exchange, - - -	\$36,050 00
January 10	To cash remitted by Pacific Express to pay July, 1857, interest and exchange, - - -	43,489 02
February 26	To cash paid Jas. L. English, Treasurer, - - -	1,557 82
	Balance, - - - - -	8,143 06
		\$89,239 90

## DR. STATE PROPERTY FUND.

1856.		
February 26	To cash paid Jas. L. English, Treasurer, - - -	\$26 81

## DR. INSANE ASYLUM.

1856.		
February 26	To cash paid Jas. L. English, Treasurer, - - -	\$106 72

## INTEREST TAX FUND, 1856.

Cr.

	By cash received into this fund from July 1st, 1856, to February 11th, 1857, inclusive. (See tabular statement.)	\$48,470 16
November.	By borrowed from General Fund to pay January interest,	16,541 10
January 10	By borrowed from General Fund to pay July, 1857, interest,	24,228 64
		<hr/> \$89,239 90

## STATE PROPERTY FUND,

Cr

1856.		
July	1 By balance,	\$26 81

## INSANE ASYLUM.

Cr.

1856.		
July	1 By balance,	\$106 72

DR. STATE PRISON INTEREST FUND.

1856.		
Decem'r 22	To cash paid state prison bonds, to Robert Allen,	\$9,000 00
1857.		
February 26	To cash paid Jas. L. English, Treasurer, - -	4,653 50
	Balance, - - - - -	724 30
		<u>\$14,377 80</u>

DR. SINKING FUND, 1851.

August 6	To cash paid for redemption of bonds Nos. 82, 88, and 212, \$500 each, - - -	\$1,500 00
September 2	To cash paid for redemption of bond No. 442, and interest, \$5 93, - - - - -	505 93
February 26	To cash paid Jas. L. English, Treasurer, - -	7,719 61
		<u>\$9,725 54</u>

DR. CERTIFICATES OF BALANCE.

1857.		
February 11	To transfer to General Fund, to close this account,	\$300 31
		<u>\$300 31</u>

## STATE PRISON INTEREST FUND.

CR.

1856.			
July	1	By balance, - - - - -	\$8,035 25
		By cash received into this fund from July 1, 1856, to February 11, 1857, inclusive. (See tabular statement.) - - - - -	6,342 52
			<u>\$14,377 80</u>

## SINKING FUND, 1851.

CR.

1856.			
July	1	By Balance, - - - - -	\$9,725 44
			<u>\$9,725 54</u>

## CERTIFICATES OF BALANCE.

CR.

1856.			
July	1	By balance, - - - - -	\$68 09
		By amount certificates of balance issued, to Feb- ruary 11, 1857, on school land warrants Nos. 507 to 511, inclusive, - - - - -	232 31
			<u>\$300 31</u>





## CASH.

CR.

	By amount paid, from July 1, 1856, to February 11, 1857, as per ledger account, - - -		\$888,703 33
February 26	By cash paid Jas. L. English, Treasurer, the following amounts, to wit:		
	General Fund, - - - -	\$2,550 76	
	Hospital Fund, - - - -	9,318 18	
	School Fund, - - - -	1,085 22	
	Military Fund, - - - -	2,279 99	
	Library Fund, - - - -	746 06	
	Estates deceased persons, - - - -	89 09	
	Interest Tax Fund, 1851, - - - -	42,814 63	
	Interest Tax Fund, 1852, - - - -	2,025 17	
	Interest Tax Fund, 1855, - - - -	934 69	
	Interest Tax Fund, 1856, - - - -	1,557 82	
	State Property Fund, - - - -	26 81	
	Insane Asylum, - - - -	106 72	
	State Prison Interest Fund, - - - -	4,653 50	
	Sinking Fund, - - - -	7,719 61	
			75,908 25
February 26	By balances:		
	General Fund, - - - -	25,558 23	
	Hospital Fund, - - - -	105 50	
	School Fund, - - - -	9,712 64	
	Military Fund, - - - -	901 30	
	Interest Tax Fund, 1851, - - - -	4,071 52	
	Interest Tax Fund, 1855, - - - -	4,885 82	
	Interest Tax Fund, 1856, - - - -	8,143 06	
	State Prison Fund, - - - -	724 30	
	Less interest Tax Fund of 1852, overdrawn, - - - -	\$54,102 37	
		5,732 45	48,369 92
			\$1,012,981 50
	Balance due from Henry Bates, - - - -		\$48,369 92

TABULAR STATEMENT OF RECEIPTS INTO THE STATE TREASURY,  
FROM THE 1ST OF JULY, 1856, TO THE 11TH OF FEBRUARY, 1857, INCLUSIVE.

DATE.	FROM WHOM RECEIVED.	General Fund.	Hospital Fund.	School Fund.	Military Fund.	Library Fund.	Estates of Deceased Persons Fund.	Interest Tax Fund, 1851.	Interest Tax Fund, 1852.	Interest Tax Fund, 1855.	Interest Tax Fund, 1856.	State Property Fund.	State Prison Interest Fund.	Insane Asylum Fund.	Sinking Fund, 1851.	TOTALS.
1856.																
July.....	1 Treasurer of San Francisco County.....	\$82,692 61		\$3,554 12	\$764 53			\$4,442 80	\$11,550 84	\$5,331 17			\$888 53			\$59,224 60
.....	2 Treasurer of San Joaquin County.....	1,759 66														1,759 66
.....	5 D. F. Douglass, Secretary of State.....					825 00										825 00
.....	8 Treasurer of Santa Cruz County.....	943 97		146 37	51 37			115 23	299 60	138 27			23 05			1,717 86
.....	10 A. Abell, Commissioner of Immigrants.....		261 50													261 50
.....	10 Treasurer of Monterey County.....	389 92		50 54				43 44	112 92	52 12			8 69			657 43
.....	11 Treasurer of Stanislaus County.....	1,600 05		185 19	23 28			87 96	228 68	105 55			17 59			2,248 30
.....	12 Treasurer of San Diego County.....	1 50														1 50
.....	12 Treasurer of Santa Barbara County.....	558 04		72 00	10 43			90 00	234 04	108 09			18 00			1,090 51
.....	18 Treasurer of Sonoma County.....	4,370 20		574 12				645 73	1,678 91	774 88			129 14			8,172 98
.....	18 Treasurer of Contra Costa County.....	1,694 83		107 56				116 44	302 75	139 74			23 29			2,384 61
.....	19 Treasurer of Nevada County.....	6,968 32		335 97				271 43	705 73	325 72			54 29			8,661 46
.....	19 Treasurer of Butte County.....	11,504 03		901 57				223 41	580 88	268 09			44 68			13,522 66
.....	21 Treasurer of Sutter County.....	2,283 97		113 52				116 32	302 43	139 58	52 20		23 26			3,031 28
.....	21 Treasurer of Placer County.....	6,554 39		416 45	218 25			118 35	307 70	142 02	236 70		23 67			8,017 53
.....	21 Treasurer of Shasta County.....	4,025 36		511 77	274 26			48 82	126 95	58 59			9 77			5,055 52
.....	21 Treasurer of Merced County.....	368 66		13 08				4 83	12 56	5 79			96			405 88
.....	21 Treasurer of Yuba County.....	3,784 62														3,784 62
.....	22 Treasurer of Alameda County.....	2,108 64		155 72				161 97	421 14	194 37	323 95		32 39			3,398 18
.....	23 Treasurer of Santa Clara County.....	2,383 05		204 25												2,587 30
.....	24 Treasurer of Amador County.....	10,571 78		475 05	108 89			256 75	667 55	308 10			51 35			12,439 47
.....	24 Treasurer of Napa County.....	709 64		112 26				64 91	168 77	77 89			12 98			1,146 45
.....	24 Treasurer of Solano County.....	1,823 52		190 97				222 50	578 50	267 00			44 50			3,126 99
.....	25 Treasurer of Calaveras County.....	734 23		9 63				12 06	31 31	14 46			2 41			804 10
.....	29 Treasurer of Tuolumne County.....	5,965 02														5,965 02
.....	31 Treasurer of Yolo County.....	3,028 70		107 65				128 57	334 28	154 28			25 72			3,779 20
.....	31 Treasurer of Marin County.....	893 58		126 67				135 15	351 39	162 18			27 03			1,696 00
August.....	2 Treasurer of Colusi County.....	826 71		153 08	97 00			38 13	99 16	45 76			7 63			1,267 47
.....	7 Treasurer of El Dorado County.....	10,928 94		1,309 59												12,238 53
.....	8 Treasurer of Humboldt County.....	842 19		147 25				78 42	203 88	94 10			15 68			1,381 52
.....	8 Treasurer of Humboldt County.....	1,726 61		91 91	33 36			53 12	138 10	63 75	43 87		10 62			2,161 34
.....	9 Treasurer of Sierra County.....	2,121 73														2,121 73
.....	29 Treasurer of San Luis Obispo County.....	27 56														27 56
September.....	4 Commissioner of Immigrants.....		4,816 50													4,816 50
.....	8 Treasurer of Trinity County.....	3,852 53		129 19				15 30	39 75	18 35			3 05			4,058 17
.....	16 Treasurer of Santa Barbara County.....	3,703 13			26 42											3,729 55
.....	25 Treasurer of Siskiyou County.....	3,075 69		403 45	54 32			154 75	402 35	185 70			30 95			4,307 21
October.....	4 D. F. Douglass, Secretary of State.....					325 00										325 00
.....	20 Treasurer of Placer County.....	7,922 36		552 63				204 15	530 80	244 98	408 30		40 83			9,904 05
.....	22 Treasurer of Yuba County.....	3,866 91		372 89				17 00	44 20	20 40	34 00		3 40			4,358 80
.....	23 Treasurer of Santa Clara County.....	13,280 85		1,735 33	196 43			1,882 72	4,895 06	2,259 26	3,765 43		376 54			28,391 62
.....	24 Treasurer of Tehama County.....	1,767 73		305 49	174 60			185 00	481 00	222 00	370 00		37 00			3,542 82
.....	30 Treasurer of Tuolumne County.....	5,559 20		323 41												5,882 61
.....	30 Treasurer of San Francisco County.....	41,795 61		4,896 87	47 58			5,948 50	15,466 10	7,138 20	11,897 00		1,189 70			88,379 56
November.....	1 Treasurer of San Joaquin County.....	8,671 00		1,170 75				1,188 72	3,090 69	1,426 47	2,377 45		237 74			18,162 82
.....	6 Treasurer of Calaveras County.....	4,346 10		191 69				159 93	415 82	191 92			31 98			5,337 44
.....	7 Treasurer of El Dorado County.....	13,972 86		1,035 23	520 76											15,528 85
.....	12 Commissioner of Immigrants.....		377 50													377 50
.....	18 Treasurer of Sacramento County.....	17,063 19		1,770 43	346 00			1,320 00	3,432 00	1,584 00	2,640 00		264 00			28,419 62
December.....	4 Commissioner of Immigrants.....		177 50													177 50
.....	6 Treasurer of Sacramento County.....	10,636 78		1,380 63				1,616 66	4,203 33	1,940 00	3,233 33		323 33			23,334 06
.....	24 Treasurer of Yuba County.....	10,854 53		1,400 60				1,750 75	4,551 94	2,100 90	3,501 50		350 14			24,510 36
.....	27 Treasurer of Mariposa County.....	8,184 70		464 30	168 92			56 08	145 79	67 28	112 15		11 22			9,210 44
1857.																
January.....	3 Treasurer of El Dorado County.....	7,342 20		155 10				193 88	504 07	232 65	337 75		38 77			8,854 42
.....	3 Treasurer of Amador County.....	3,323 00		302 97				107 13	278 53	128 55	214 25		21 42			4,375 85
.....	5 Treasurer of Shasta County.....	5,773 66		690 99	187 80			629 35	1,636 31	755 22	1,258 70		125 87			11,057 90
.....	5 Treasurer of Yuba County.....	3,850 95														3,850 95
.....	5 Treasurer of Los Angeles County.....	524 16		53 44	82 07											659 67
.....	6 Treasurer of Sutter County.....	3,329 65		521 05	294 88			464 89	1,208 72	557 86	929 77		92 98			7,399 80
.....	6 Treasurer of Placer County.....	10,980 72		385 43				249 90	649 74	299 88	499 80		49 98			13,115 46
.....	6 Treasurer of Marin County.....	764 62		137 98				92 28	239 98	110 77	184 58		18 46			1,548 67
.....	7 Commissioner of Immigrants.....		294 50													294 50
.....	7 David F. Douglass, Secretary of State.....					300 00										300 00
.....	7 Treasurer of Alameda County.....	5,662 84		763 16	96 62			775 42	2,016 09	930 50	1,550 83		155 08			11,950 54
.....	7 Treasurer of San Joaquin County.....	2,800 05		270 42				338 02	878 86	405 63	676 05		67 61			5,436 64
.....	8 Treasurer of Santa Cruz County.....	1,668 32		209 00				261 27	679 28	313 51	522 52		52 25			3,706 15
.....	8 Treasurer of Napa County.....	4,422 55		604 21	56 47			630 65	1,639 69	756 78	1,261 30		126 13			9,497 78
.....	9 Treasurer of Merced County.....	1,490 79		207 46				195 50	508 30	234 60	391 00		39 10			3,066 75
.....	9 Treasurer of Tuolumne County.....	9,370 69		1,089 36				517 35	1,345 11	620 82	1,034 70		103 47			14,081 50
.....	8 Treasurer of Yolo County.....	2,584 53		299 75	87 30			262 75	683 21	315 33	525 55		52 55			4,810 97
.....	8 Treasurer of Santa Clara County.....	1,878 59		170 43	30 56			168 30	437 58	201 96	336 60		33 66			3,257 68
.....	13 Treasurer of Monterey County.....	3,665 01		514 99	24 25			532 37	1,384 17	638 85	1,064 75		106 47			7,930 86
.....	15 Treasurer of San Diego County.....	1,213 60		159 21				160 17	416 46	192 20	320 34		32 03			2,994 01
.....	17 Treasurer of Solano County.....	5,254 09		659 35				742 33	1,930 06	890 79	1,484 68		148 47			11,109 77
.....	23 Treasurer of Tehama County.....	1,397 94		179 02	16 16			213 81	555 90	256 57	427 62		42 76			3,089 78
.....	26 Treasurer of Contra Costa County.....	2,293 42		343 32				319 70	831 22	383 64	639 40		63 94			4,874 64
February.....	3 Treasurer of Butte County.....	13,348 71		999 53	254 64			294 80	766 46	353 76	589 59		58 96			16,666 45
.....	3 Treasurer of Santa Barbara County.....	2,532 96		357 59				376 60	979 16	451 92	753 20		75 32			5,526 75
.....																